

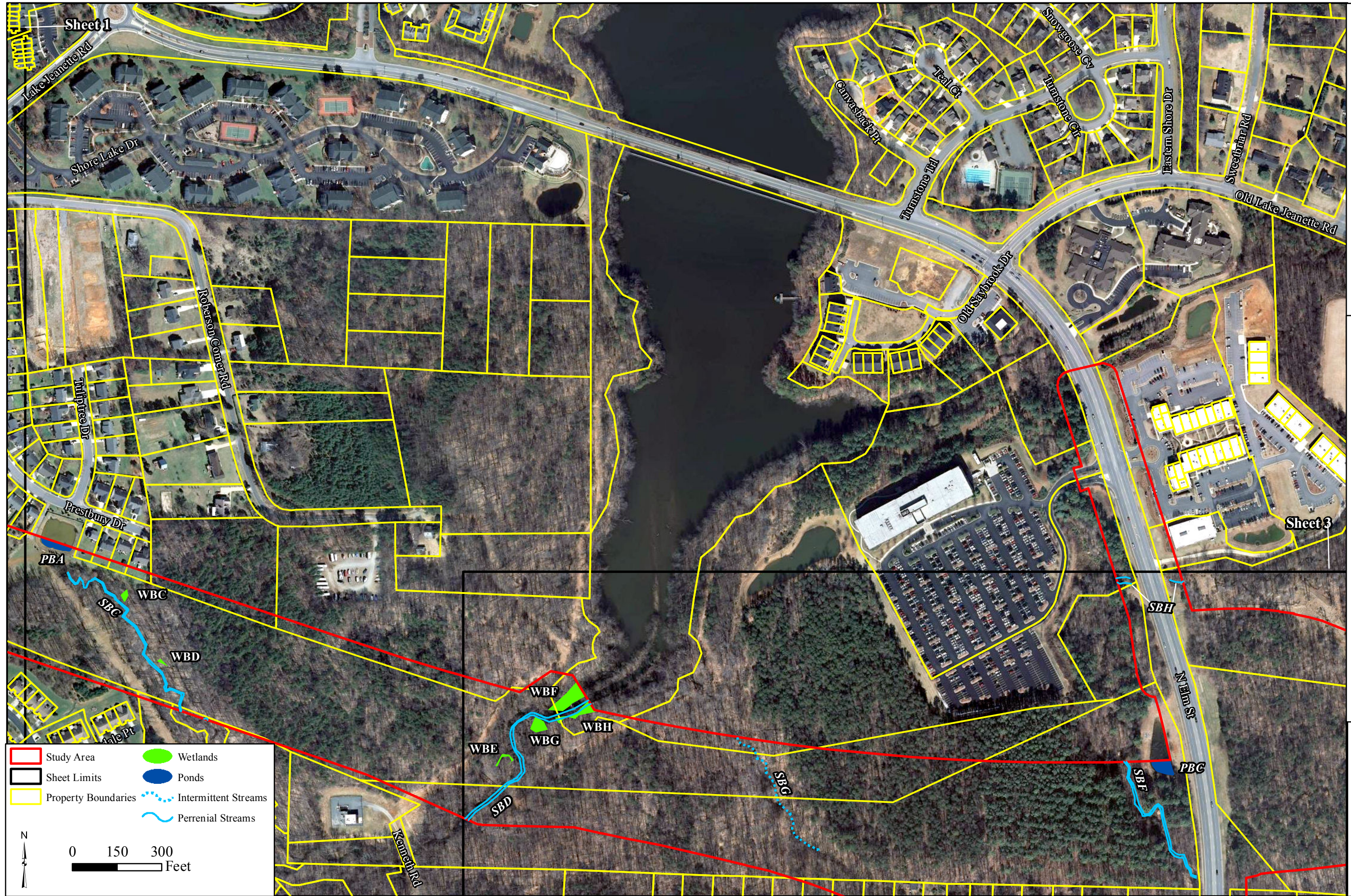
Sheet 2

JD Appeals Map Sheet 1 of 7
 TIP U-2525C
 Greensboro Eastern Loop
 Guilford County

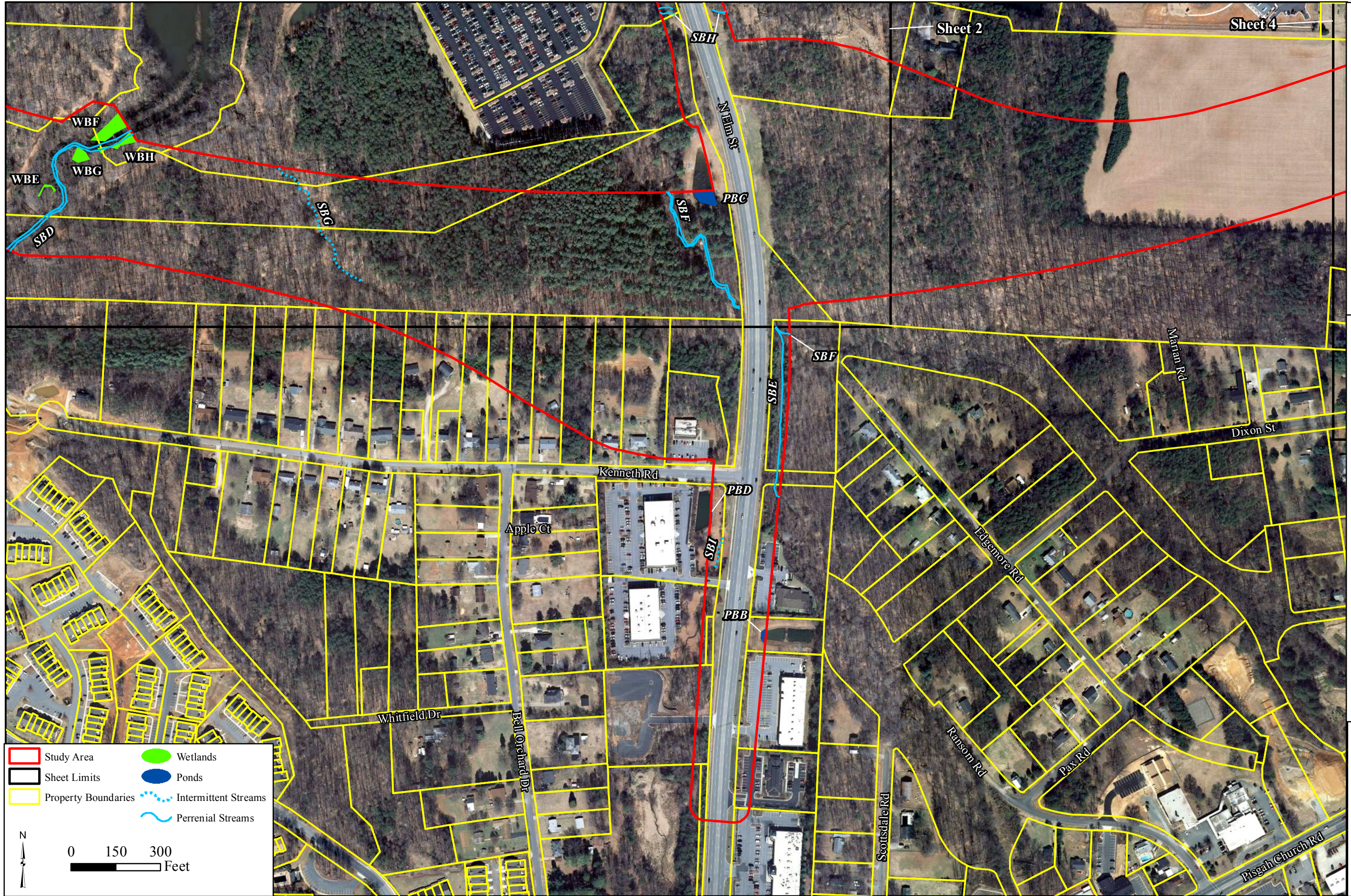
Data Sources:
 NC Statewide 2010 Aerial Photographs








CAROLINA ECOSYSTEMS, INC.
 3040 NC 42 West, Clayton NC, 27520
 P:(919)-606-9145 F:(919)-585-5570

February 2014



Data Sources:
 NC Statewide 2010 Aerial Photographs



 Study Area	 Wetlands
 Sheet Limits	 Ponds
 Property Boundaries	 Intermittent Streams
	 Perennial Streams

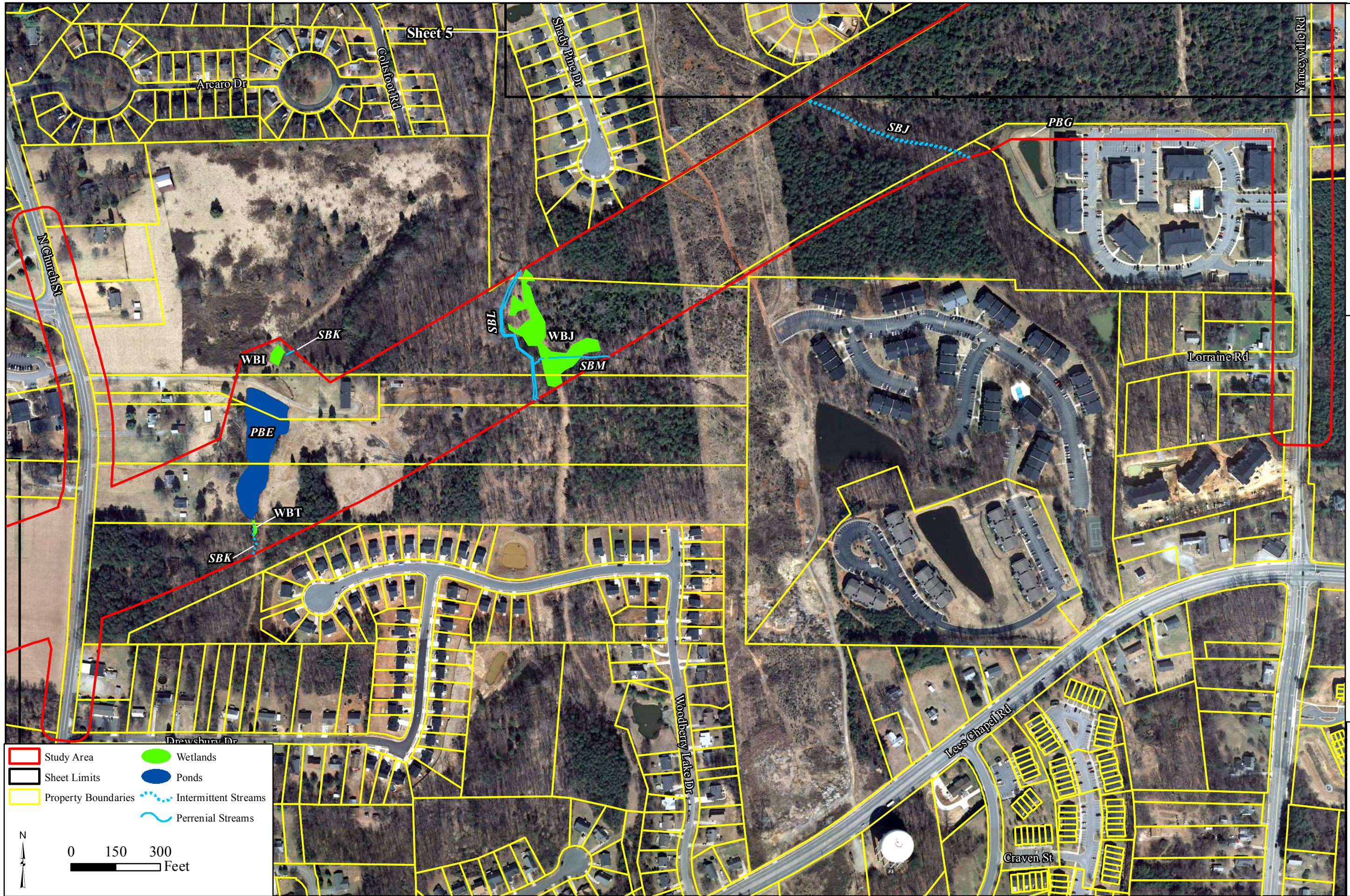
N

0 150 300 Feet

JD Appeals Map Sheet 3 of 7
 TIP U-2525C
 Greensboro Eastern Loop
 Guilford County

Data Sources:
 NC Statewide 2010 Aerial Photographs

CAROLINA ECOSYSTEMS, INC.
 3040 NC 42 West, Clayton NC, 27520
 P:(919)-606-9145 F:(919)-585-5570
 February 2014



Study Area
 Sheet Limits
 Property Boundaries

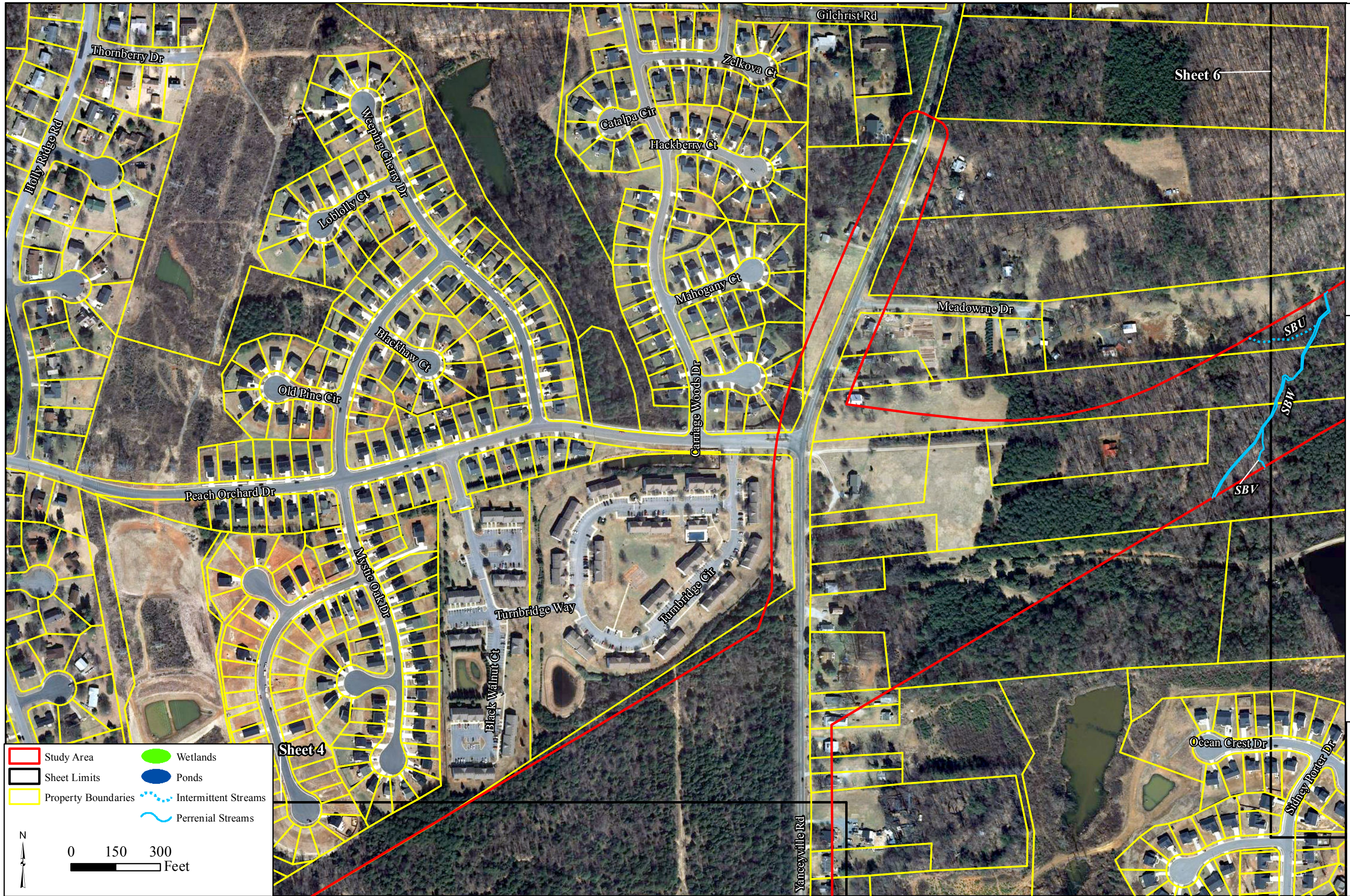
Wetlands
 Ponds
 Intermittent Streams
 Perennial Streams

N
 0 150 300
 Feet

JD Appeals Map Sheet 4 of 7
 TIP U-2525C
 Greensboro Eastern Loop
 Guilford County

Data Sources:
 NC Statewide 2010 Aerial Photographs

CAROLINA ECOSYSTEMS, INC.
 3040 NC 42 West, Clayton NC, 27520
 P:(919)-606-9145 F:(919)-585-5570
 February 2014



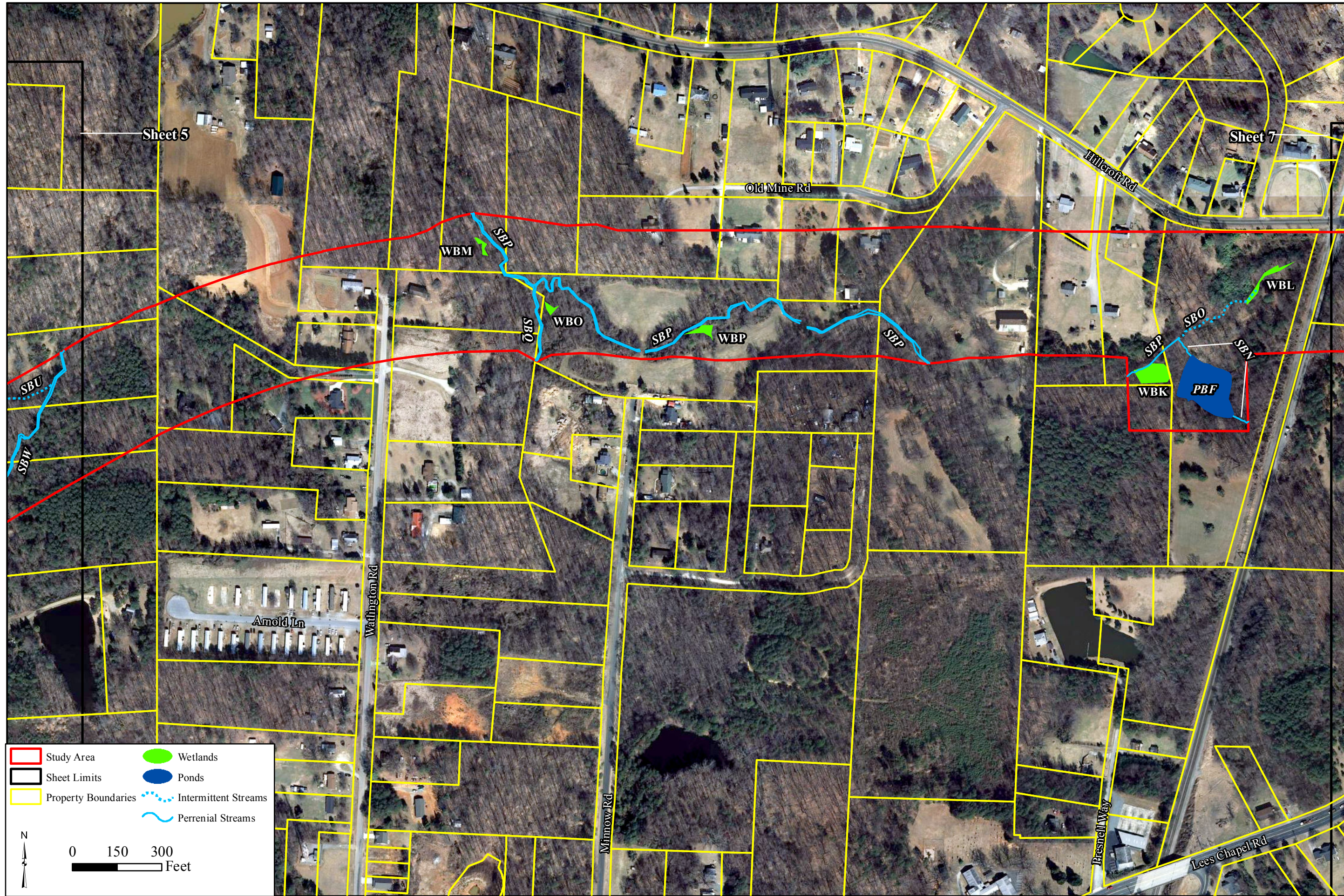
Study Area
 Sheet Limits
 Property Boundaries
 Wetlands
 Ponds
 Intermittent Streams
 Perennial Streams

N
 0 150 300
 Feet

JD Appeals Map Sheet 5 of 7
 TIP U-2525C
 Greensboro Eastern Loop
 Guilford County

Data Sources:
 NC Statewide 2010 Aerial Photographs

CAROLINA ECOSYSTEMS, INC.
 3040 NC 42 West, Clayton NC, 27520
 P:(919)-606-9145 F:(919)-585-5570
 February 2014



Sheet 5

Sheet 7

Old Mine Rd

Hillcroft Rd

Arnold Ln

Watlington Rd

Minnow Rd

Presnell Way

Lees Chapel Rd

WBM

SBP

WBO

SBO

SBP

WBP

SBP

WBL

SBO

SBP

SBN

WBK

PBF

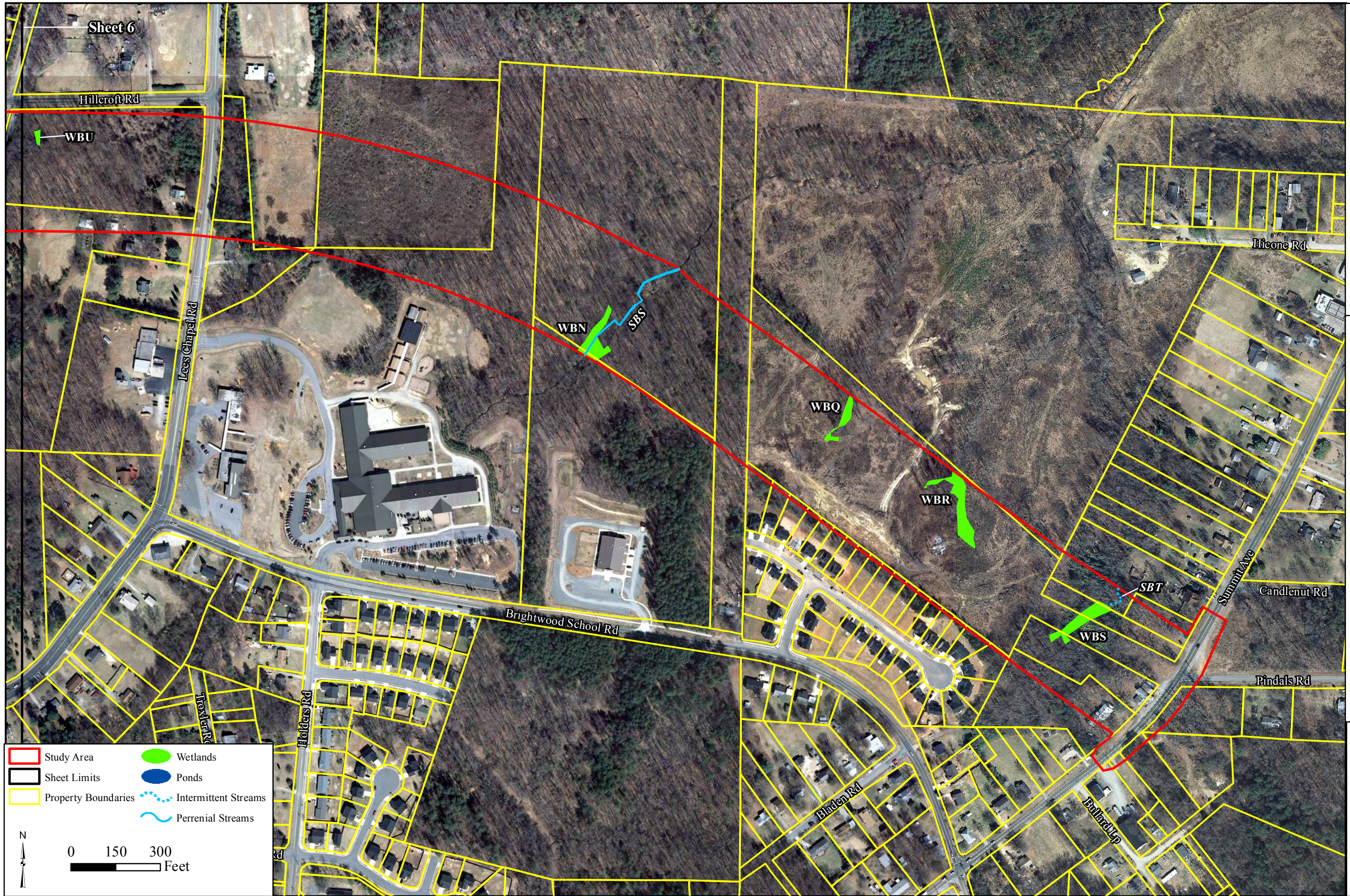
- Study Area
- Sheet Limits
- Property Boundaries
- Wetlands
- Ponds
- Intermittent Streams
- Perennial Streams



JD Appeals Map Sheet 6 of 7
 TIP U-2525C
 Greensboro Eastern Loop
 Guilford County

Data Sources:
 NC Statewide 2010 Aerial Photographs

CAROLINA ECOSYSTEMS, INC.
 3040 NC 42 West, Clayton NC, 27520
 P:(919)-606-9145 F:(919)-585-5570
 February 2014



Sheet 6

Hillcroft Rd

WBU

Lees Chapel Rd

WBN

SBS

WBO

WBR

SBT

WBS

Brightwood School Rd

Bladen Rd

Bullard Ln

Hicone Rd

Summit Ave

Candlenut Rd

Pindals Rd

Study Area
 Sheet Limits
 Property Boundaries
 Wetlands
 Ponds
 Intermittent Streams
 Perennial Streams

0 150 300
 Feet

JD Appeals Map Sheet 7 of 7
 TIP U-2525C
 Greensboro Eastern Loop
 Guilford County

Data Sources:
 NC Statewide 2010 Aerial Photographs

CAROLINA ECOSYSTEMS, INC.
 3040 NC 42 West, Clayton NC, 27520
 P:(919)-606-9145 F:(919)-585-5570
 February 2014